

Maintaining and promoting editorial proficiency in the life sciences



INSIDE:

- From the President
- New Certified Editors
- Monthly Poll Results



The BELS Letter

Bryan Tutt, ELS(D)
Managing Editor

Alex Rudie
Publications Coordinator



From the President

This month's message is short and sweet, just as summer always seems to be! I hope that you have a chance to find a new adventure or two, whether it's a stay-cation or a journey that takes you farther afield. Either way, for those of us in a part of the world where the weather is turning warmer, this is a great time of year to recharge our personal and professional batteries. Taking time to focus on our own well-being makes us better editors in the long run.

We have a lot of exciting things happening in the coming months, and you'll hear more about them soon. Our Diversity, Equity, and Inclusion Task Force has

Continued on page 2

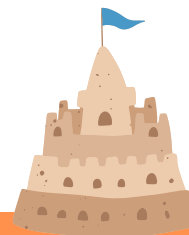
From the President

Continued from page 1

kicked off with an enthusiastic group of volunteers, and I can't thank them enough for their efforts. If you'd like to join us in this time-limited effort, please be sure to email me. We'd love to have you!

Until then, thank you as always for being part of our BELS story!

*Melanie Fridl Ross, MSJ, ELS
BELS President*



BELS Member Discounts

BELS has partnered with resource providers to offer valuable members-only discounts on products and services that help make your job easier. These offers are exclusive to BELS members and should not be shared with any non-member.

BELS member discounts include a **30% discount** on a single license of PerfectIt software. PerfectIt improves consistency, ensures quality, and saves time. BELS members also receive a **20% discount** on reference books such as *Scientific Style and Format: The CSE Manual for Authors, Editors, and Publishers* and *The Chicago Manual of Style*. The discount can be applied to both online and print versions of these books. Visit bels.org and click on Member Resources to claim your discounts today!



**Scientific
Style and
Format**

The CSE Manual for Authors,
Editors, and Publishers

8th Edition
Council of Science Editors

**The
Chicago
Manual
of Style**

SEVENTEENTH EDITION

THE ESSENTIAL GUIDE
for Writers, Editors, and Publishers

New Certified Members

Akshatha Addoni, ELS
Regine Armann, PhD, ELS
Elyse Artis, ELS
Abigail Azrael, ELS
Krithika Balasubramanian, PhD, ELS
Shira Berman, ELS
Emmanuelle Botte, ELS
Caroline Cole, ELS
Paul Danielian, PhD, ELS
Christopher Hamme, BA, ELS
Xi He, PhD, ELS
Meredith Joheim, MS, ELS
Lisa Korst, MD, PhD, ELS
Theresa Lawrence, ELS
Cara-Beth Lillback, ELS
Rupali Madapura, ELS
Carolyn Mahler, ELS
Divya Makhija, ELS
Dawn Maxemow, ELS
Michelle Munkres, MA, ELS
Sejalben Patel, ELS
Andrew Ryan, ELS
Dawn Schmidt, PhD, ELS
Ansaf Shaikh, ELS
Arunima Shome, ELS
Varsha Vijay, ELS
Sharese Willis, PhD, ELS
Megan Zborowski, ELS

CONGRATULATIONS

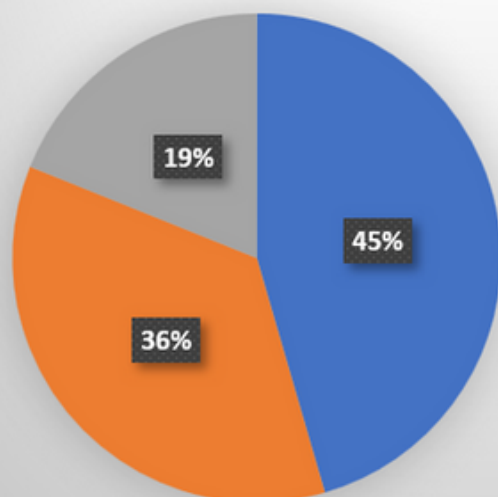
Monthly Poll Results



May's poll asked us to choose the most clear and concise way to phrase a sentence about a patient's decision regarding surgery. The most common response was, "The patient must decide if they will have surgery." It's good to see that more editors are accepting the singular "they."

June's poll asks which of several annoying phrases you'd like to see removed from the English language. Be sure to vote for your pet peeve at bels.org!

Which sentence do you think is the most clear and concise?



- The patient must decide if they will have surgery.
- The patient must decide whether or not to have surgery.
- The patient must decide whether to have surgery or not.

Be There With BELS On!

BELS branded merchandise is now available! Now you can proudly display the BELS logo on your tote bag, mug, travel tumbler, sweatshirt, laptop case, or mouse pad. They make great gifts for colleagues, employees, friends, family, and yourself! Please visit www.bels.org/store to order.



Officers

Melanie Fridl Ross, MSJ, ELS
President

Stephen N. Palmer, PhD, ELS
President-Elect

Lisa Kisner, ELS, CAE
Secretary

Christine F. Wogan, MS, ELS
Treasurer

Board of Directors

Naomi L. Ruff, PhD, ELS
Chair, Certification Examination Development

Thomas P. Gegeny, MS, ELS
Chair, Certification Maintenance

Jane Krauhs, PhD, ELS(D)
Chair, Diplomate Examination Development

Leslie E. Neistadt, ELS
Chair, Registrar & Examination Administration

Carrie Thurber, ELS
Chair, Membership & Marketing

Bryan Tutt, MA, ELS(D)
Nominations & Elections, and Newsletter Editor

Stephen Bublitz, ELS
Chair, Professional Development

Yateendra Joshi, ELS(D)
Board Member at Large – International
Membership

Non-voting Board Member
Sheryle Hazard, CAE
Executive Director

The Board of Editors in the Life Sciences (BELS) was founded in 1991 to evaluate the proficiency of manuscript editors in the life sciences and to award credentials similar to those obtainable in other professions.

Potential employers and clients of manuscript editors usually have no objective way to assess the proficiency of editors. For their part, editors are frustrated by the difficulty of demonstrating their ability. That is why both employers and editors so often resort to personal references or ad hoc tests, not always with satisfactory results. The need for an objective test of editorial skill has long been recognized.

To meet that need, BELS developed a process for testing and evaluating proficiency in editing in the life sciences. The Board administers two examinations—one for certification and one for diplomate status. The examinations, written by senior life-science editors assisted by testing experts, focus on the principles and practices of scientific editing in English.

