



Maintaining and promoting editorial proficiency in the life sciences



From the President

Happy February, all! Ever since I moved to Texas, I've thought of February as a month when anything can happen. We could have a hard freeze, or a string of warm, sunny days—or both. You just never know.

How will you prepare for whatever might come next? When it comes to your professional life, BELS can certainly help. You can log on to the members-only section of the [BELS website](#) to look at job postings, member discounts on software, the BELS Directory and Freelance Directory, recordings of member events, and previous issues of this newsletter, among other things. You can also make sure your member profile and contact

Continued on page 2

INSIDE:

- From the President
- Make Your Desk Work For (Not Against) You
- Newly Certified Editors
- Monthly Poll Results

The BELS Letter

Urvika Pawar, ELS
Managing Editor

Alex Rudie
Publications Coordinator

From the President

Continued from page 1



information are up to date to ensure that you are receiving all the latest updates from BELS.

Be sure to join us for this month's online social event: [Make Your Desk Work For \(Not Against\) You](#). Do you prefer to sit or stand while you work? Is everything you need easy to grab or buried? What is in your office space can greatly affect your productivity, mood, and ability to focus. Come share your office setup tips and learn how fellow BELS members organize their workspaces.

Finally, BELS still needs volunteers for its committees! If you're interested in joining the Budget and Finance, Membership and Communications, Marketing and Promotions, Professional Development, Certification Exam Development, Diplomate Program, or Exam Administration Committee, just check the boxes you want on the [volunteer interest form](#).

*Steve Palmer, PhD, ELS
BELS President*

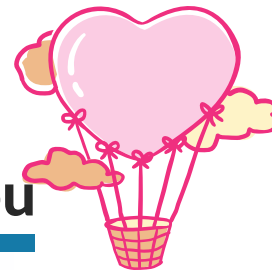


Show Your Love for BELS! ♥

Proudly display the BELS logo on your tote bag, mug, travel tumbler, sweatshirt, laptop case, or mouse pad. BELS merchandise items make great gifts for colleagues, employees, friends, family, and yourself! You can also ship directly to the recipient. Visit www.bels.org/store to order.



Make Your Desk Work For (Not Against) You



MAKE YOUR DESK WORK FOR (NOT AGAINST) YOU

Thursday, February 22
5 pm CDT via Zoom

Do you prefer to sit or stand while you work? Is everything you need easy to grab or buried?

What is in your office space can greatly affect your productivity, mood, and ability to focus. Come share your office setup tips and learn how fellow BELS members organize their workspaces.

Register at bels.org



Plus, save the date for these upcoming members-only social events!

- Thursday, March 28, 2024 (5:00 pm CDT): [Special Presentation: Fostering a Growth Mindset](#)
- Thursday, May 23, 2024 (5:00 pm CDT): [Music to My Ears: Finding Harmony in Work and Life](#)

Updated BELS Code of Ethics

The BELS Code of Ethics has been updated! Make sure to refresh your memory and take a look at the new sections of the [BELS Code of Ethics](#). For more resources, make sure to check out the [Member Resources section](#).

Newly Certified Editors

Congratulations to our newly certified editors!

Justine Cadieux, ELS

Jessica Hatch, ELS

Hannah Imankulov, ELS

Katharine Inoue, MA, ELS

Andrew Mathis, ELS

Rebecca Oster Bach, MA, ELS

CONGRATULATIONS

BELS Member Discounts

BELS has partnered with resource providers to offer valuable members-only discounts on products and services that help make your job easier. These offers are exclusive to BELS members and should not be shared with any non-member.

BELS member discounts include a **30% discount** on a single license of PerfectIt software. PerfectIt improves consistency, ensures quality, and saves time. BELS members also receive a **20% discount** on reference books such as *Scientific Style and Format: The CSE Manual for Authors, Editors, and Publishers* and *The Chicago Manual of Style*. The discount can be applied to both online and print versions of these books. Visit bels.org and click on Member Resources to claim your discounts today!



**Scientific
Style and
Format**

The CSE Manual for Authors,
Editors, and Publishers

8th Edition
Council of Science Editors

**The
Chicago
Manual
of Style**

SEVENTEENTH EDITION

THE ESSENTIAL GUIDE
for Writers, Editors, and Publishers

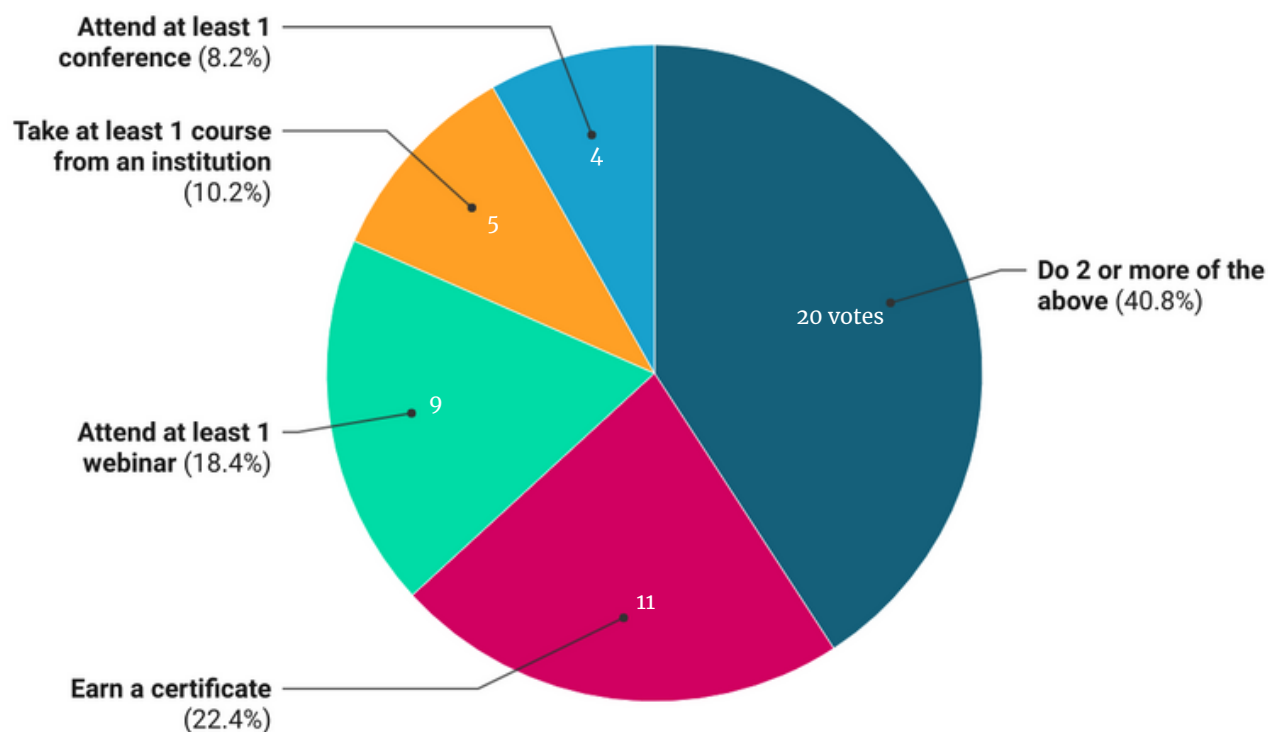
Monthly Poll Results

In January's poll, we asked you to tell us what you will do in 2024 to improve your value as an editor. A total of 49 responses were recorded this month. Apparently, most poll respondents (40.8%) plan to take two or more of the actions listed. The top single action that respondents said they would take was "earn a certificate." Both results are good news for certifying organizations like BELS. We hope poll respondents will follow through on the actions they have expressed!

Visit bels.org to participate in this month's poll, which asks you to select the sentence that is most likely to be read wrong.

What will you do in 2024 to improve your value as an editor?

January 2024 BELS Poll Results



Created with Datawrapper

Have questions about this data? Have suggestions for future poll questions? Please send them to us at info@bels.org.



Renew Your BELS Membership for 2024!

If you have not yet done so, be sure to renew your BELS membership before February 29! (You even have an extra day this year – thank you Leap Year!) If you do not renew by the deadline, you will be marked inactive on March 1 and lose access to *all* your amazing member benefits. [Log in to renew today!](#)

Officers

Stephen N. Palmer, PhD, ELS
President

Lisa Kisner, ELS, CAE
Secretary

Christine F. Wogan, MS, ELS
Treasurer

Melanie Ross, MSJ, ELS
Immediate Past President
Chair, Nominations & Elections

Board of Directors

Naomi L. Ruff, PhD, ELS
Chair, Certification Examination Development

Thomas P. Gegeny, MS, ELS
Chair, Certification Maintenance

Jane Krauhs, PhD, ELS(D)
Chair, Diplomate Examination Development

Leslie E. Neistadt, ELS
Chair, Registrar & Examination Administration

Carrie Thurber, ELS
Chair, Membership

Kim Mankiewicz, PhD, ELS
Chair, Marketing

Stephen Publitz, ELS
Chair, Professional Development

Yateendra Joshi, ELS(D)
Board Member at Large – International
Membership

Non-voting Board Member
Sheryle Hazard, CAE
Executive Director

The Board of Editors in the Life Sciences (BELS) was founded in 1991 to evaluate the proficiency of manuscript editors in the life sciences and to award credentials similar to those obtainable in other professions.

Potential employers and clients of manuscript editors usually have no objective way to assess the proficiency of editors. For their part, editors are frustrated by the difficulty of demonstrating their ability. That is why both employers and editors so often resort to personal references or ad hoc tests, not always with satisfactory results. The need for an objective test of editorial skill has long been recognized.

To meet that need, BELS developed a process for testing and evaluating proficiency in editing in the life sciences. The Board administers two examinations—one for certification and one for diplomate status. The examinations, written by senior life-science editors assisted by testing experts, focus on the principles and practices of scientific editing in English.

