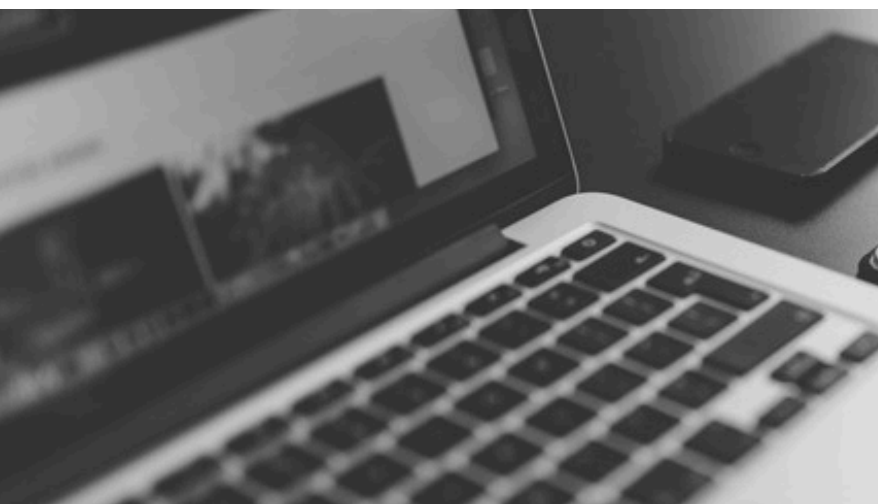


Maintaining and promoting editorial proficiency in the life sciences



From the President

May is here! Here in Houston, May marks the tail end of the lovely weather that usually begins around mid-March. Now is the time to get out there and enjoy the bayou trails and bluebonnets before the heat of summer sets in.

I've got a couple of other things to tell you about this month. First, May the Fourth isn't just Star Wars Day; it's also our anniversary! The first BELS exam was given on that day 33 years ago.

Second, on Thursday the 23rd, we'll have a members-only online social event called "Music to My Ears: Finding Harmony in

Continued on page 2

INSIDE:

- From the President
- Music to My Ears
- Newly Certified Editors
- Monthly Poll Results

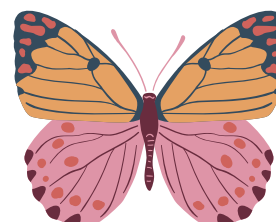
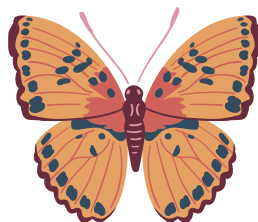
The BELS Letter

Urvika Pawar, ELS
Managing Editor

Alex Rudie
Publications Coordinator

From the President

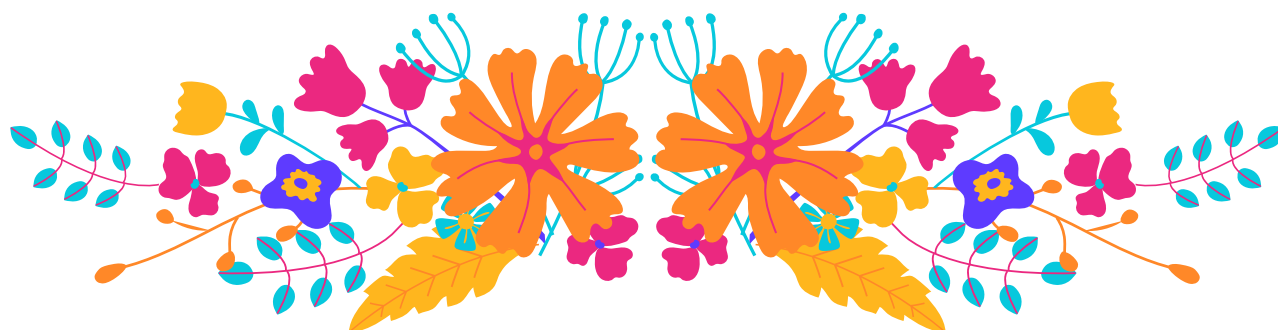
Continued from page 1



Work and Life.” Participants will discuss the pitfalls of and ideas for managing your time and the boundaries between work and the rest of your life.

Seize the day, all.

Steve Palmer, PhD, ELS
BELS President



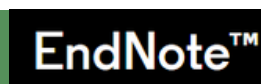
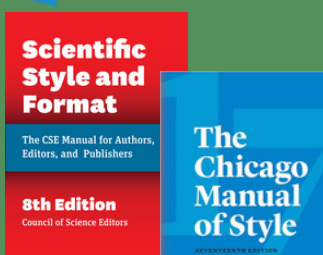
New BELS Member Discounts Are Blooming!

Grow your resource list while saving some green! BELS has partnered with resource providers to offer valuable members-only discounts on products and services that help make your job easier. These offers are exclusive to BELS members and should not be shared with any non-member.

BELS member discounts include:

- 30% discount on a single license of PerfectIt software
- 20% discount on reference books from The University of Chicago Press
- 20% discount on Draftsmith AI, offered by Intelligent Editing *New!*
- \$50 discount on a single-user perpetual license for EndNote 21 *New!*

Visit bels.org and click on Member Resources to claim your discounts today!



Music to My Ears



Music to My Ears: Finding Harmony in Work and Life



Thursday, May 23
5 pm CDT via Zoom



Does your daily calendar make you cry? Did you check your 'last' post-work email five messages ago?

We all struggle with setting boundaries with work, our families, and even with ourselves. Come share your experiences with managing time and boundaries with fellow BELS members and learn some tips to help take back your day.



Register at bels.org



Missed our previous events? We've got you covered. Head over to our [Member Event Recordings hub](#), where we've compiled the links to recordings of past virtual member events for you to replay at your convenience.

Credit Tracker Now Available

We are pleased to inform you that the Credit Tracker for the Certification Maintenance program is now available on the BELS website. Remember to [visit the website](#) for an overview of how the tracker works. As always, reach out to us using the "Contact Us" feature if you have any questions.





Newly Certified Editors

Cecile Berberat, MA, MFA, ELS
Qiao Cheng, ELS
Cynthia Faux, DVM, PhD, ELS
Karolina Gajowiec-Szef, MA, ELS
Emily Hines, PhD, ELS
Helen-Joy Lynerd, ELS
Helena Mickle, ELS
Jessica Moody, ELS
Sonal Nafade, ELS
Marither Policarpio, MSN, ELS
Alan Purvis, ELS
Ramya Ramakrishnan, CHDS, ELS
Catarina Remédios, ELS
Joshua Russell, MD, ELS
Anthony Shuga, ELS



CONGRATULATIONS

Spring into the New Season with BELS!

Proudly display the BELS logo on your tote bag, mug, travel tumbler, sweatshirt, laptop case, or mouse pad. BELS merchandise items make great gifts for colleagues, employees, friends, family, and yourself! You can also ship directly to the recipient. Visit www.bels.org/store to order.



Monthly Poll Results

In last month's poll, we asked you to select which of the following sentences was most likely to be misunderstood.

- The patients presented with varying clinical manifestations.
- The egret provoked fish to leap into the air like shimmering water sprouts.
- Invariably, the park has its detractors.
- Delays caused pipeline companies to abandon projects all together.

At **321**, the number of respondents in April's poll was unusually (and pleasantly) large! We suspect this may be because of publicity or interest in the ELS certification. In any case, visitors are welcome!

The most popular (71.7%) answer by far was the first one (“...varying clinical manifestations”). Although it seems possible that a patient's presentation of some diseases or conditions could vary during an appointment with a physician or over several different appointments, the most likely interpretation is that the author of the sentence used “varying” instead of “various.” Another interpretation is that the sentence refers to a physical group of patients who exhibited various manifestations of various conditions, not the same condition.

The second most popular (11.2%) answer was the second sentence (“...shimmering water sprouts”). Water does not seem likely to have sprouts, but we would like to think the sentence should say “water sprites” instead of the more likely “waterspouts” (“whirlwinds that form over water” — *Wiktionary*).

As for the third sentence (“...the park has its detractors”), a park might “inevitably” have detractors; this seems more likely than “invariably,” which seems wrong with the verb (“has”). Lastly, pipeline companies are more likely to have abandoned projects “altogether,” although “all together” seems possible.

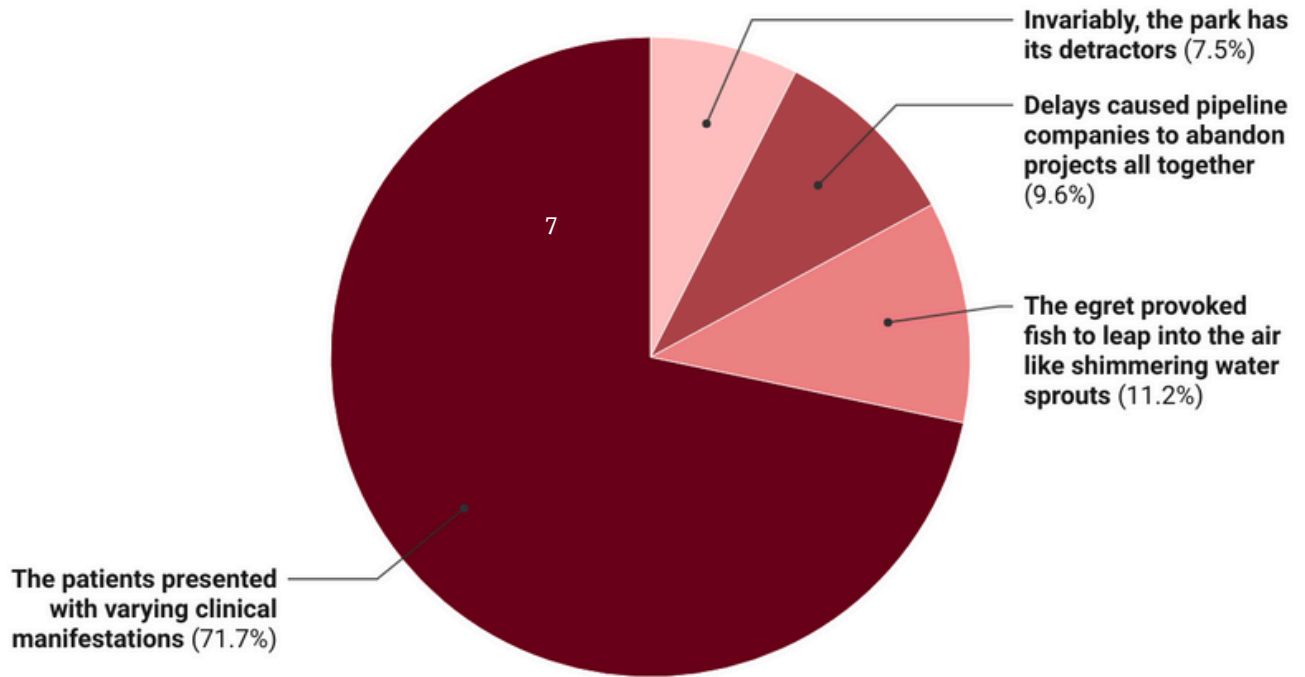
Head over to bels.org to participate in this month's poll, which asks you to select which of the listed options is most likely to repel readers.



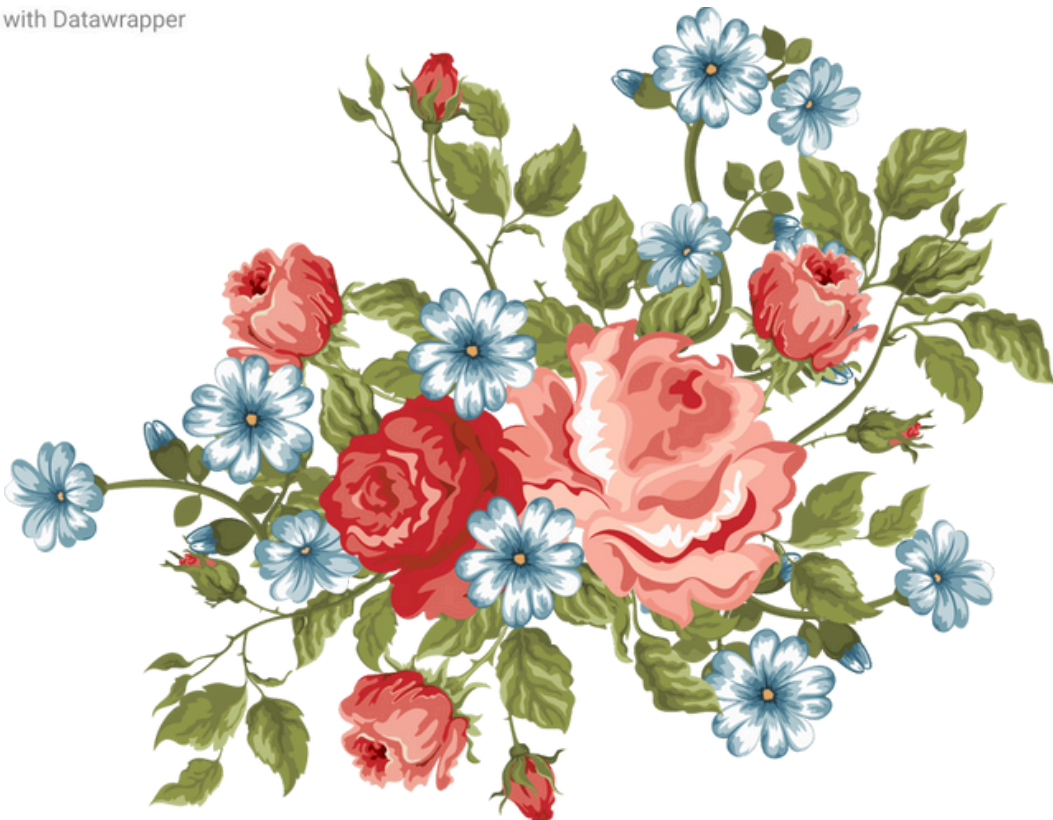
Monthly Poll Results

Which sentence is most likely to be misunderstood?

April 2024 BELS Poll Results



Created with Datawrapper



Officers

Stephen N. Palmer, PhD, ELS
President

Lisa Kisner, ELS, CAE
Secretary

Christine F. Wogan, MS, ELS
Treasurer

Melanie Ross, MSJ, ELS
Immediate Past President
Chair, Nominations & Elections

Board of Directors

Naomi L. Ruff, PhD, ELS
Chair, Certification Examination Development

Thomas P. Gegeny, MS, ELS
Chair, Certification Maintenance

Jane Krauhs, PhD, ELS(D)
Chair, Diplomate Examination Development

Leslie E. Neistadt, ELS
Chair, Registrar & Examination Administration

Carrie Thurber, PhD, ELS
Chair, Membership

Kim Mankiewicz, PhD, ELS
Chair, Marketing

Stephen Bublitz, ELS
Chair, Professional Development

Yateendra Joshi, ELS(D)
Board Member at Large – International
Membership

Non-voting Board Member
Sheryle Hazard, CAE
Executive Director

The Board of Editors in the Life Sciences (BELS) was founded in 1991 to evaluate the proficiency of manuscript editors in the life sciences and to award credentials similar to those obtainable in other professions.

Potential employers and clients of manuscript editors usually have no objective way to assess the proficiency of editors. For their part, editors are frustrated by the difficulty of demonstrating their ability. That is why both employers and editors so often resort to personal references or ad hoc tests, not always with satisfactory results. The need for an objective test of editorial skill has long been recognized.

To meet that need, BELS developed a process for testing and evaluating proficiency in editing in the life sciences. The Board administers two examinations—one for certification and one for diplomate status. The examinations, written by senior life-science editors assisted by testing experts, focus on the principles and practices of scientific editing in English.

