

The BELS Letter

Board of Editors in the Life Sciences

Maintaining and promoting editorial proficiency in the life sciences

From the President

If Punxsutawney Phil is on the mark, we're in for six more weeks of winter. (At least if you're in an area where winter is a thing. Down here in Florida, we're more like humid, more humid, and hot for most of the year.) And when I heard the groundhog's latest annual prediction, I couldn't help but think about the movie *Groundhog Day*, where Bill Murray plays a character caught in a time loop, doomed to repeat the same day over and over.

Fortunately, BELS has a team of wonderful leaders, volunteers, and members who

Continued on page 2

INSIDE:

- From the President
- BELS Featured Members
- Monthly Poll Results
- New Certified Editors

The BELS Letter

Bryan Tutt, ELS(D)
Managing Editor

Alex Rudie
Publications Coordinator



From the President

Continued from page 1

avoid such repetition by thinking of ways we can innovate and maximize value.

We'll of course want to continue doing what works. But come Groundhog Day 2023, we'll no doubt also have continued to evolve as an organization to bring added meaning to you and to the profession.

I hope you were able to join our recent members-only event on setting freelance editing rates, led by Laura J. Ninger, ELS. Thank you, Laura, for taking time to share your expertise.

Remember to visit the BELS website to check out past member events, to see our latest poll, and to learn about other resources, including ways you can get involved through one of our committees.

Have an idea for the newsletter? Know a member you'd like us to spotlight? We welcome your input. Send us your suggestions!

*Melanie Fridl Ross, MSJ, ELS
BELS President*

BELS Featured Members



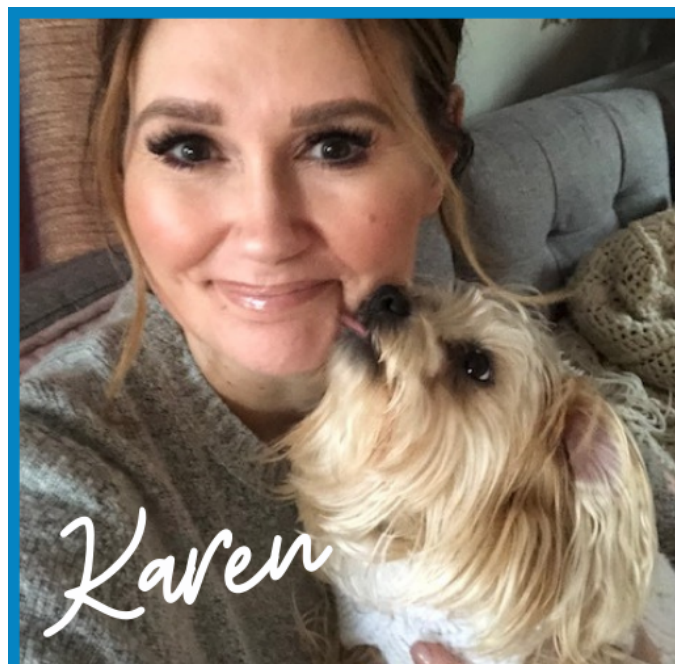
BELS
Board of Editors in the Life Sciences
MEMBER PROFILE

Kassel Coover, ELS

Associate Director, Editorial
Razorfish Health

Year of ELS certification:
2016

Grammar pet peeve:
I should accept it since it's so common, but it still bugs me to see "alright" instead of "all right."



BELS
Board of Editors in the Life Sciences
MEMBER PROFILE

Karen Stanwood, ELS

Director, Electronic Publishing and Production
Health Care Books and Journals
SLACK Incorporated

Year of ELS certification:
1999

Grammar pet peeve:
"myriad of"

Monthly Poll Results

The January BELS poll asked members to choose the most confusing sentence from a group of five imperfect sentences. Although each sentence had an issue that could create confusion, BELS members overwhelmingly chose “We create maps that we can use to control invasive species and promote native species with and find the best fish habitat” as the most confusing. This choice was likely because of the awkward placement of “with.”

Please visit www.bels.org to participate in our next poll and find other resources to help you get the most out of your BELS membership.

Which of these sentences do you think is most confusing?



- We create maps that we can use to control invasive species and promote native species with and find the best fish habitat. (62.5%)
- Avoiding social contact because of hearing loss may affect both physical and emotional well-being, any of which may mediate the relationship between hearing and brain health. (25.0%)
- This procedure can reduce a dangerously elevated white blood cell count or collect them for therapeutic purposes. (12.5%)
- I joined a group of 5 others. (0%)

New Certified Editors

In January 2022, 6 people were certified as Editors of the Life Sciences after passing the certification examination and meeting the other requirements. Please welcome our newest members and congratulate them on this achievement when you get the chance!

Marci Fern Adilman, ELS

Suzan A Alkhodair, MBBS, ELS

Bridget Andrews, PhD, ELS

Eva Veronica Lasič, PhD, ELS

Olga Norstrom, ELS

Rosemary Stephanie Procko, ELS

CONGRATULATIONS

Officers

Melanie Fridl Ross, MSJ, ELS
President

Kristina Wasson-Blader, PhD, ELS
Immediate Past President

Lisa Kisner, ELS, CAE
Secretary

Christine F. Wogan, MS, ELS
Treasurer

Board of Directors

Jane Krauhs, PhD, ELS(D)
Chair, Diplomate Examination Development

Leslie E. Neistadt, ELS
Chair, Registrar & Examination Administration

Stephen N. Palmer, PhD, ELS
Chair, Nominations and Elections

Naomi L. Ruff, PhD, ELS
Chair, Certification Examination Development

Thomas P. Gegeny, MS, ELS
Chair, Certification Maintenance

Karen Stanwood, ELS
Chair, Membership & Marketing

Stephen Bubnitz, ELS
Board Member at Large

John D. McDonald, MA, DTM, ELS
Board Member at Large

Non-voting Board Member
Sheryle Hazard, CAE
Executive Director

The Board of Editors in the Life Sciences (BELS) was founded in 1991 to evaluate the proficiency of manuscript editors in the life sciences and to award credentials similar to those obtainable in other professions.

Potential employers and clients of manuscript editors usually have no objective way to assess the proficiency of editors. For their part, editors are frustrated by the difficulty of demonstrating their ability. That is why both employers and editors so often resort to personal references or ad hoc tests, not always with satisfactory results. The need for an objective test of editorial skill has long been recognized.

To meet that need, BELS developed a process for testing and evaluating proficiency in editing in the life sciences. The Board administers two examinations—one for certification and one for diplomate status. The examinations, written by senior life-science editors assisted by testing experts, focus on the principles and practices of scientific editing in English.