

The BELS Letter

Board of Editors in the Life Sciences

Maintaining and promoting editorial proficiency in the life sciences



From the President

Because of American Thanksgiving holiday, November has become the unofficial month of gratitude. So, for what are you grateful? I'm grateful for our BELS volunteers, committee chairs, and board of directors and all the hard work they do. November 12 marks our annual board retreat to discuss our goals for BELS in 2022 and our strategic plan for the future of the organization. We'll share updates from the retreat during our annual business meeting on November 18, as well as our upcoming holiday event on December 15. You don't want to miss either of these important meetings!

Continued on page 2

INSIDE:

- From the President
- BELS Featured Members
- New Certified Editors

The BELS Letter

Karen Stanwood, ELS
(with Eevee)
Managing Editor



Alex Rudie
Publications Coordinator

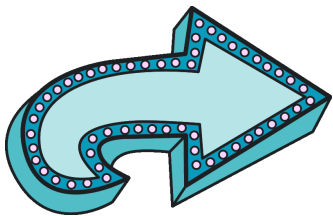
From the President

Continued from page 1

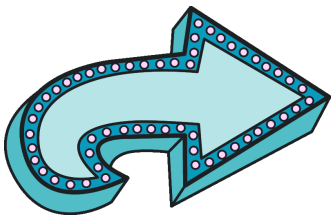
It's also membership renewal time. Don't forget to renew your BELS membership for **just \$45** before December 31! Renewing (or starting) your BELS membership allows you to attend our exclusive events, access our recording library, post in the freelance directory, unlock product discounts, and more. What are you waiting for?

*Kristina Wasson-Blader, PhD, ELS
BELS President*

DON'T MISS OUT!



**BELS ANNUAL BUSINESS MEETING
WEDNESDAY, NOVEMBER 18
11:00 AM TO 12:30 PM, CENTRAL**



**BELS HOLIDAY EVENT
WEDNESDAY, DECEMBER 15
2:00 TO 3:00 PM, CENTRAL**

BELS Featured Members



BELS
Board of Editors in the Life Sciences
MEMBER PROFILE

Loretta Bohn, ELS

Senior Editor/Writer
RTI International

Year of ELS certification:
2019

Grammar pet peeve:
impactful



BELS
Board of Editors in the Life Sciences
MEMBER PROFILE

Laura J. Ninger, ELS

Writer and Editor
Ninger Medical Communications, LLC
www.ningermedcom.com

Year of ELS certification:
1999

Grammar pet peeves:
'to impact,' 'comprised of,'
'to liase'

BELS Featured Members



BELS
Board of Editors in the Life Sciences

MEMBER PROFILE

Eloise DeHaan, ELS

Medical Copyeditor and
Stakeholder Engagement Coordinator
ECRI

Year of ELS certification:
2014

Grammar pet peeve:
None. Working with words
makes me happy.



BELS
Board of Editors in the Life Sciences

MEMBER PROFILE

Laura Sitler, ELS

Freelance Medical Editor, LS Editorial Solutions
LSEditorialSolutions.com

Year of ELS certification:
2018

Grammar pet peeves:
using 'data' with a singular
verb and proper use of
'good' versus 'well'

New Certified Editors

Amy C. Akers, ELS
Christine Iris Alston, PhD, ELS
Laura Tibaquirá Barragán, ELS
Allison Spearman Battista, ELS
Lauren Nichole Bragg, ELS
Manasi Gupta, ELS
Varsha Madagouni, ELS
Sara J. Mason, MSc, ELS
Jeff Melvin, ELS
Elizabeth Orient, ELS
Heidi Grayson Reinholdt, MLS, MA, ELS
Denise Tousignant, MSc, ELS
Cynthia J. Wells, ELS

CONGRATULATIONS

Officers

Kristina Wasson-Blader, PhD, ELS
President

Melanie Fridl Ross, MSJ, ELS
President-Elect

Lisa Kisner, ELS, CAE
Secretary

Christine F. Wogan, MS, ELS
Treasurer

Board of Directors

Jane Krauhs, PhD, ELS(D)
Chair, Diplomate Examination Development

Leslie E. Neistadt, ELS
Chair, Registrar & Examination Administration

Stephen N. Palmer, PhD, ELS
Chair, Nominations and Elections

Naomi L. Ruff, PhD, ELS
Chair, Certification Examination Development

Thomas P. Gegeny, MS, ELS
Chair, Certification Maintenance

Karen Stanwood, ELS
Chair, Membership & Marketing

Stephen Bubnitz, ELS
Board Member at Large

John D. McDonald, MA, DTM, ELS
Board Member at Large

Non-voting Board Member
Sheryle Hazard, CAE
Executive Director

The Board of Editors in the Life Sciences (BELS) was founded in 1991 to evaluate the proficiency of manuscript editors in the life sciences and to award credentials similar to those obtainable in other professions.

Potential employers and clients of manuscript editors usually have no objective way to assess the proficiency of editors. For their part, editors are frustrated by the difficulty of demonstrating their ability. That is why both employers and editors so often resort to personal references or ad hoc tests, not always with satisfactory results. The need for an objective test of editorial skill has long been recognized.

To meet that need, BELS developed a process for testing and evaluating proficiency in editing in the life sciences. The Board administers two examinations—one for certification and one for diplomate status. The examinations, written by senior life-science editors assisted by testing experts, focus on the principles and practices of scientific editing in English.